

VH 2V 系列高压球阀

VH2V Series High Pressure Ball Valve

型号说明 Model Code

VH2V -- M27×1.5 -- 1 1 1 2 -- 01 X -- *

1 2 3 4 5 6 7 8 9

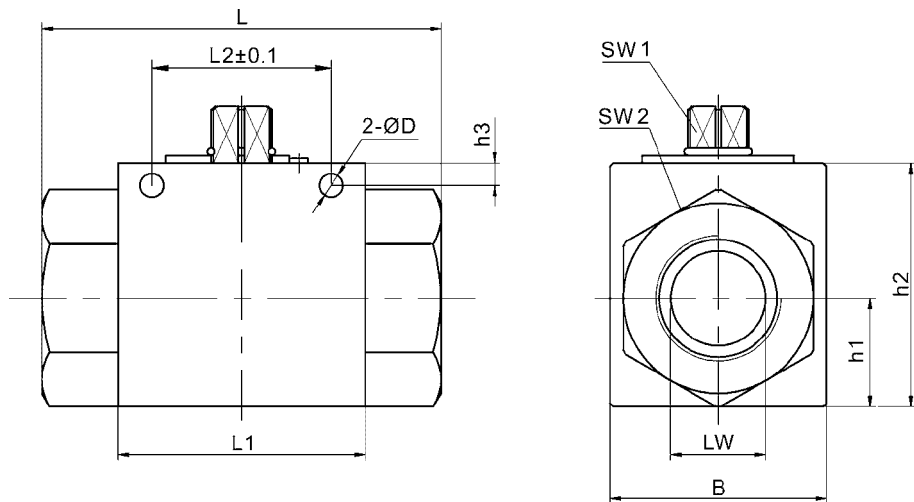
- 1、系列代号: VH2V系列
Series Code: VH2V Series
 - 2、连接代号: M**, G**, **LR, **SR, PT**, NPT**
Joint Code: M**, G**, **LR, **SR, PT**, NPT**
 - 3、阀体材料: 1-钢
Valve Body Material: 1-Steel
 - 4、球体材料: 1-钢、2-黄铜
Ball Body Material: 1-Steel, 2-Brass
 - 5、工作温度: 1. -25~+100℃, 2. -30~+170℃
Operating Temperature: 1. -25~+100℃, 2. -30~+170℃
 - 6、其他密封: 2-丁晴橡胶、4-氟橡胶
Other Airproof: 2-NBR, 4-FPM
 - 7、手柄形式: 01-铝质直柄、02-铝质曲柄、03-铸锌直柄、04-铸锌曲柄、
05-钢质直柄、06-钢质曲柄、09-不带手柄
Handle Type: 01-Aluminium straight handle, 02-Aluminium crooked handle, 03-Casting zinc straight handle, 04-Casting zinc crooked handle, 05-Steel straight handle, 06-Steel crooked handle, 09-Without handle
 - 8、设计序号: 由生产商定
Design Number: To be decided by the manufacturer
 - 9、表面处理: 空白-磷化、G-电镀黄锌
Surface Disposal: Blank-Phosphoric polish, G- Electroplated yellow zinc
- 备注: 适用介质/**Applicable Medium**: 液压油 Hydraulic Oil



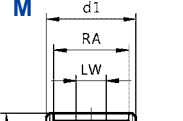
图形符号 Symbol

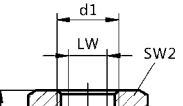


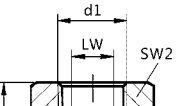
外形尺寸 Overall Dimension

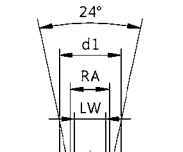


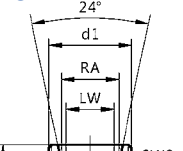
外形尺寸 Overall Dimension

连接口略图 Connection	简略型号 Part No.	PN (bar)	DN	LW	RA	d1	i	L	L1	B	L2	h1	h2	SW1	SW2	D	h3
 <p>本接头符合JB984-77标准 This tie-in accord JB984-77 standard</p>	VH2V-M16×1.5	500	06	06	11	M16×1.5	11	69	40	26	31.5	13.5	35	09	22	4.5	4.8
	VH2V-M27×1.5	500	10	10	20	M27×1.5	12	76	42	32	31.5	16	40	09	27	5.3	5.8
	VH2V-M36×2	315	20	20	30	M36×2	15	103	60	48	48.5	25	58	12	41	6.5	6
	VH2V-M42×2	315	25	23	35	M42×2	18	116	65	57	50.5	28.5	65	12	50	8.5	7

连接口略图 Connection	简略型号 Part No.	PN (bar)	DN	LW	RA	d1	i	L	L1	B	L2	h1	h2	SW1	SW2	D	h3
	VH2V-G1/4	500	06	06	/	G1/4	14	69	40	26	31.5	13.5	35	09	22	4.5	4.8
	VH2V-G3/8	500	10	10	/	G3/8	14	72	42	32	31.5	16	40	09	27	5.3	5.8
	VH2V-G1/2	500	13	13	/	G1/2	16	83	48	35	38.5	18	45	09	30	6.5	6
	VH2V-G3/4	315	20	20	/	G3/4	18	93	60	50	48.5	23	58	12	41	6.25	6
	VH2V-G1	315	25	25	/	G1	21	115	65	57	50.5	27.5	65	12	46	8.5	9

连接口略图 Connection	简略型号 Part No.	PN (bar)	DN	LW	RA	d1	i	L	L1	B	L2	h1	h2	SW1	SW2	D	h3
	VH2V-NPT1/4	500	06	06	/	NPT1/4	14	69	40	26	31.5	13.5	35	09	22	4.5	4.8
	VH2V-NPT3/8	500	10	10	/	NPT3/8	14	72	42	32	31.5	16	40	09	27	5.3	5.8
	VH2V-NPT1/2	500	13	12	/	NPT1/2	16	83	48	35	38.5	18	45	09	30	6.5	6
	VH2V-NPT3/4	315	20	20	/	NPT3/4	18	95	60	50	48.5	23	58	12	41	6.5	6
	VH2V-NPT1	315	25	25	/	NPT1	21	113	65	57	50.5	27.5	65	12	46	8.5	7

连接口略图 Connection	简略型号 Part No.	PN (bar)	DN	LW	RA	d1	i	L	L1	B	L2	h1	h2	SW1	SW2	D	h3
	VH2V-08LR	500	06	06	08	M14×1.5	10	67	40	26	31.5	13.5	35	09	22	4.5	4.8
	VH2V-12LR	500	10	10	12	M18×1.5	11	74	42	32	31.5	16	40	09	27	5.3	5.8
	VH2V-15LR	500	13	12	15	M22×1.5	12	82	48	35	38.5	18	45	09	30	6.5	6
	VH2V-18LR	500	13	12	18	M26×1.5	12	82	48	35	38.5	18	45	09	30	6.5	6
	VH2V-22LR	315	20	19	22	M30×2	14	101	60	50	48.5	23	58	12	41	6.5	6
	VH2V-28LR	315	25	24	28	M36×2	14	108	65	57	50.5	27.5	65	12	46	8.5	7

连接口略图 Connection	简略型号 Part No.	PN (bar)	DN	LW	RA	d1	i	L	L1	B	L2	h1	h2	SW1	SW2	D	h3
	VH2V-10SR	500	06	06	10	M18×1.5	12	73	40	26	31.5	13.5	35	09	22	4.5	4.8
	VH2V-14SR	500	10	10	14	M22×1.5	14	80	42	32	31.5	16	40	09	27	5.3	5.8
	VH2V-16SR	500	13	13	16	M24×1.5	14	86	48	35	38.5	18	45	09	30	6.5	6
	VH2V-20SR	500	13	12	20	M30×2	16	90	48	35	38.5	18	45	09	30	6.5	6
	VH2V-25SR	315	20	20	25	M36×2	18	109	60	50	48.5	23	58	12	41	6.5	6
	VH2V-30SR	315	25	25	30	M42×2	20	120	65	57	50.5	27.5	65	12	46	8.5	7

高压球阀
Ball Valve Series

单向阀类
Check Valve Series

溢流阀类
Flow Valve Series

节流阀类
Throttle Valve Series

梭阀类
Shuttle Valve Series

液控锁紧阀类
Hydraulic Lock Series

平衡阀类
Balance Valve Series

多路阀类
Multi-Function Valve Series

控制阀组类
Control Valve Series

附件类
Accessories